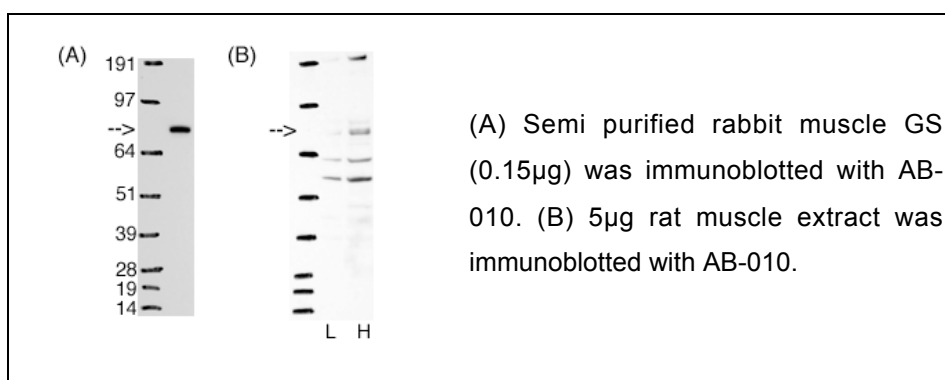


**Anti glycogen synthase
mouse muscle GS****Order No. AB-010****Antibody concentration: 1.5 mg/ml****Lot No 1****Amount per vial: 100µg****Store at -20°C****Product description:**

Polyclonal, affinity purified antibody raised in sheep against the peptide CGEFLAQNEEKP, resembling residues 163-173 of mouse muscle glycogen synthase plus N-term C. Recognizes rat, human, mouse, other species not tested. Best affinity in rodents.

Applications: Western blotting, Immunoprecipitation**Application advise**

Western blocking buffer: 5% dry milk, 50mM Tris pH 7.5, 150mM NaCl, 0.1% Tween.

1st Ab buffer: 0.05 – 1µg/ml antibody in western blocking buffer. Wash buffer: 50mM Tris pH 7.5, 150mM NaCl, 0.1% Tween.

2nd Ab buffer: HRP coupled anti sheep Pierce 31480 (1:10000) in western blocking buffer.

For IP use 5-10µg antibody per IP.

Background information

Glycogen synthase is involved in the regulation of blood glucose levels via the synthesis of muscle and liver glycogen. This antibody is against the muscle isoform, which is phosphorylated and regulated by a number of protein kinases including GSK3, AMPK and Casein Kinase 1.

For in vitro use only.

For research use only.

Not for clinical use or consumption.

Not for diagnostic use.

Do not inject in humans or animals.