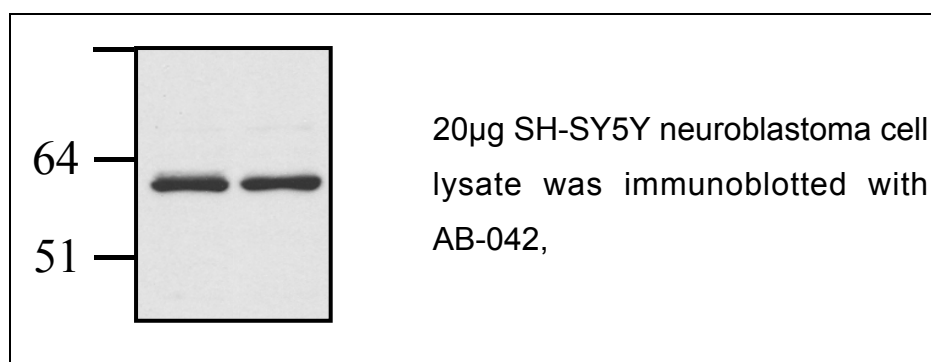


Anti CRMP-2 / DRP-2**Collapsin Response mediator protein 2****Dihydropyrimidinase-related protein 2****Order No. AB-042****Antibody concentration: 0.98 mg/ml****Amount per vial: 100µg****Lot No 1****Store at -20°C****Product description:**

Polyclonal, affinity purified antibody raised in sheep against recombinant CRMP-2, Acc. No.: Q16555. Recognizes human and mouse CRMP-1, CRMP-2 and CRMP-4. Will also recognize GST.

Applications: Western blotting, IP**Application advise**

Western blocking buffer: 5% dry milk, 50mM Tris pH 7.5, 150mM NaCl, 0.1% Tween.

1st Ab buffer: 0.1 – 0.5µg/ml antibody in western blocking buffer. Wash buffer: 50mM Tris pH 7.5, 150mM NaCl, 0.1% Tween.

2nd Ab buffer: HRP coupled anti sheep Pierce 31480 (1:10000) in western blocking buffer.

For IP use 1-3µg antibody and 0.1mg extract.

Note: CRMP is very abundant in brain extracts.

Background Information

CRMP2 was identified as a major brain substrate for glycogen synthase kinase 3. Residues Thr509, Thr514 and Thr518 are phosphorylated by GSK3 upon priming by phosphorylation of Ser522, possibly by CDK5 (Cole et al., (2004) J. Biol. Chem. 279:50176-80 and Cole et al., (2006) J. Biol. Chem. 281:16591-8).

For in vitro use only.

For research use only.

Not for clinical use or consumption.

Not for diagnostic use.

Do not inject in humans or animals.