

**Anti Methyl Transferase like 1
METTL1, human**

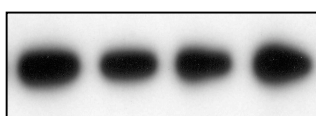
Order No. AB-150

Antibody concentration: 0.2 mg/ml

Lot No 1

Amount per vial: 100µg

Store at -20°C



METTL1 was immunoprecipitated from 1.5mg HEK293 extracts and immunoblotted with AB-150. The antibody also works in total extracts.

Product description:

Polyclonal, affinity purified antibody raised in sheep against rec. METTL1, Q9UBP6. Recognizes human METTL1. Other species not tested.

Applications: Western blotting, IP, IHC not tested

Application advise

Western blocking buffer: 5% dry milk, 50mM Tris pH 7.5, 150mM NaCl, 0.1% Tween.

1st Ab buffer: 1 – 2µg/ml antibody in western blocking buffer. Wash buffer: 50mM Tris pH 7.5, 150mM NaCl, 0.1% Tween.

2nd Ab buffer: HRP coupled anti sheep Pierce 31480 (1:10000) in western blocking buffer.

For IP use 5µg antibody and 1mg protein extract.

For in vitro use only. For research use only. Not for clinical use or consumption.

Not for diagnostic use. Do not inject in humans or animals.