

Anti filamin C

Anti α filamin

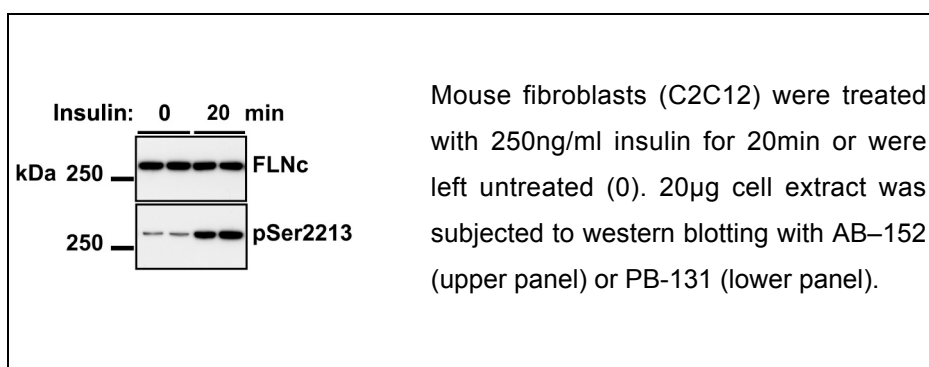
Order No. AB-152

Antibody concentration: 0.26 mg/ml

Amount per vial: 100 μ g

Lot No 1

Store at -20°C



Product description:

Polyclonal, affinity purified antibody raised in rabbit against the peptide SKTRGGETKREVRVEEST resembling aminoacids 2160-2177 of human filamin C. Recognizes human, rat and mouse, other species not tested.

Applications: Western blotting, Immunoprecipitation, IHC (only with human and rat cells)

Application advise

Western blocking buffer: 5% dry milk, 50mM Tris pH 7.5, 150mM NaCl, 0.1% Tween.

1st Ab buffer: 0.2 μ g/ml antibody in western blocking buffer for o/n incubation. Wash buffer: 50mM Tris pH 7.5, 150mM NaCl, 0.1% Tween.

2nd Ab buffer: HRP coupled anti sheep Pierce 31480 (1:10000) in western blocking buffer.

For IP use 5 μ g antibody for 1mg protein.

For IHC use 0.4-1.0 μ g/ml.

Background information

Murray et al., 2004 Biochem. J. Vol 384 pp489-494 describe the discovery of filamin C as physiological substrates of AKT1/PKB. The authors used the KESTREL approach for the discovery.

For in vitro use only.

For research use only.

Not for clinical use or consumption.

Not for diagnostic use.

Do not inject in humans or animals.