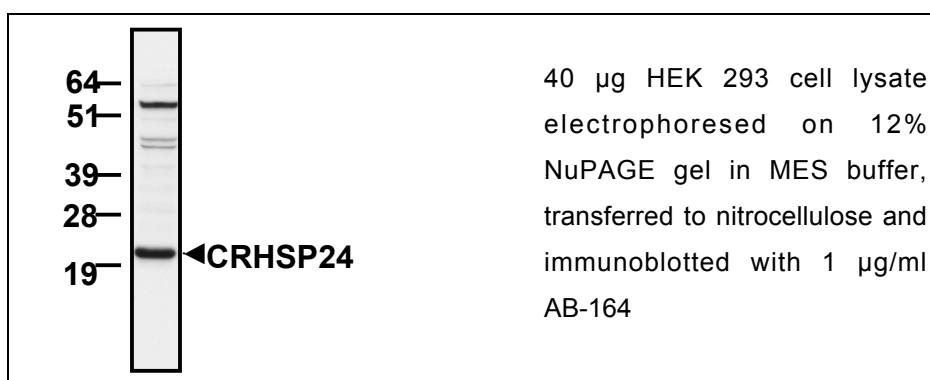


**Anti CRHSP24****Order No. AB-164****Anti Calcium-Regulated Heat-Stable Protein of 24 kDa****Antibody concentration: 0.17 mg/ml****Lot No 1****Amount per vial: 100µg****Store at -20°C****Product description:**

Polyclonal, affinity purified antibody raised in sheep against the full length protein. Recognizes human and mouse, other species not tested. Cross reactive with human PIPPin.

**Applications:** Western blotting, Immunoprecipitation, Immunofluorescence**Application advise**

Western blocking buffer: 5% dry milk, 50mM Tris pH 7.5, 150mM NaCl, 0.1% Tween.

1st Ab buffer: 1µg/ml antibody in western blocking buffer. Wash buffer: 50mM Tris pH 7.5, 150mM NaCl, 0.1% Tween. Incubate for  $\geq$  2 hours.

2nd Ab buffer: HRP coupled anti sheep Pierce 31480 (1:10000) in western blocking buffer.

For IP use 1µg antibody for 1mg protein.

For IHC use 0.4-1.0µg/ml.

**Background information**

Auld et al., 2005 Biochem. J. 389:775-783 describe the discovery of CRHSP24 and PIPPin as physiological substrates of PKB□, SGK1 and RSK1 using the KESTREL approach.

For in vitro use only.

For research use only.

Not for clinical use or consumption.

Not for diagnostic use.

Do not inject in humans or animals.