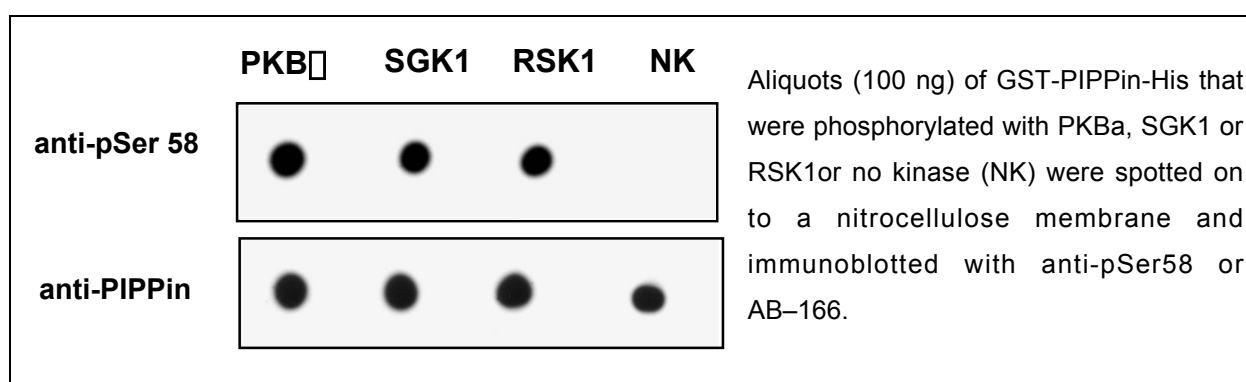


Anti PIPPin
Order No. AB-166
Anti RNA-binding protein PIPPin
Antibody concentration: 1.1 mg/ml
Lot No 1
Amount per vial: 100µg

Product description:

Polyclonal, affinity purified antibody raised in sheep against the full length protein. Recognizes human and mouse, other species not tested. Cross reactive with human CRHSP24. The antibody was not tested in cell extracts.

Store at -20°C
Applications: Western blotting, other not tested

Application advise

Western blocking buffer: 5% dry milk, 50mM Tris pH 7.5, 150mM NaCl, 0.1% Tween.

1st Ab buffer: 1µg/ml antibody in western blocking buffer. Wash buffer: 50mM Tris pH 7.5, 150mM NaCl, 0.1% Tween. Incubate for >= 2 hours.

2nd Ab buffer: HRP coupled anti sheep Pierce 31480 (1:10000) in western blocking buffer.

For IP use 1µg antibody for 1mg protein.

Background information

Auld et al., 2005 Biochem. J. 389:775-783 describe the discovery of CRHSP24 and PIPPin as physiological substrates of PKB□, SGK1 and RSK1 using the KESTREL approach.

For in vitro use only.

For research use only.

Not for clinical use or consumption.

Not for diagnostic use.

Do not inject in humans or animals.