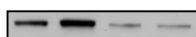


**Anti glycogen synthase phospho Ser 641/645****Order No. PB-012****Antibody concentration: 2.76 mg/ml****Lot No 1****Amount per vial: 100µg****Store at -20°C**

control | insulin



10µg skeletal muscle extract from insulin treated mice or control mice was subjected to western blotting with PB-012. Phosphorylation of serine 641 and 645 at muscle glycogen synthase is reduced in insulin treated animals.

**Product description:**

Polyclonal, affinity purified antibody raised in sheep against the peptide RYPRPVpSVPPpSPSLSR, resembling residues 635-650 of mouse glycogen synthase Acc. Number Q9Z1E4, phosphorylated at residues 641 and 645. 1mg dephospho peptide RYPRPVSVPPSPSLSR is provided.

**Applications:** Western blotting**Application advise**

Western blocking buffer: 10% dry milk, 50mM Tris pH 7.5, 150mM NaCl, 0.1% Tween.

1st Ab buffer: 1µg/ml antibody, 10µl dephospho peptide in western blocking buffer.

Incubate for 4 to 16 hours at 4°C for optimal results.

Wash buffer: 50mM Tris pH 7.5, 150mM NaCl, 0.1% Tween.

2nd Ab buffer: HRP coupled anti sheep Pierce 31480 (1:10000) in western blocking buffer.

## **Background information**

Glycogen synthase kinase 3 phosphorylates glycogen synthase (GS) at Ser641 and Ser645. When insulin sensitive cells (e.g in skeletal muscle, liver and brain) are stimulated with insulin upon food uptake, GSK3 becomes inactivated and hence Ser641 and Ser645 of GS become dephosphorylated. This results in the activation of GS and generation of glycogen.

For in vitro use only.

For research use only.

Not for clinical use or consumption.

Not for diagnostic use.

Do not inject in humans or animals.