

Anti glycogen synthase phospho Ser 8

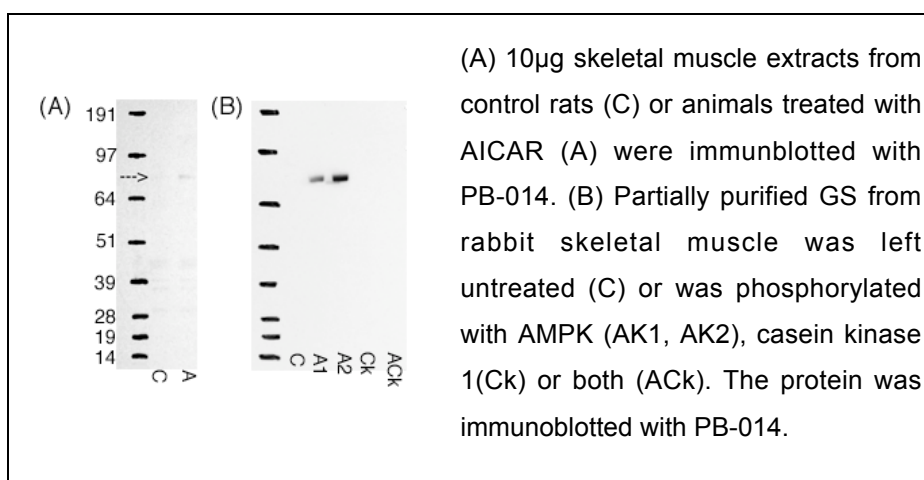
Order No. PB-014

Antibody concentration: 1.11 mg/ml

Lot No 1

Amount per vial: 100µg

Store at -20°C



Product description:

Polyclonal, affinity purified antibody raised in sheep against the peptide CPLSRSLpSMSSLPGLED, resembling residues 2-17 of rat glycogen synthase Acc. Number S02269, phosphorylated at residue 8. Recognises human, rat and rabbit. Mouse not tested.

Applications: Western blotting, Immunohistochemistry

Application advise

Western blocking buffer: 10% dry milk, 50mM Tris pH 7.5, 150mM NaCl, 0.1% Tween.

1st Ab buffer: 0.1µg/ml antibody in western blocking buffer. Incubate for 4 to 16 hours at 4°C for optimal results. Wash buffer: 50mM Tris pH 7.5, 150mM NaCl, 0.1% Tween.

2nd Ab buffer: HRP coupled anti sheep Pierce 31480 (1:10000) in western blocking buffer.

For IHC start optimisation at 1µg/ml.

Background information

Glycogen synthase is involved in the regulation of blood glucose levels via the synthesis of muscle and liver glycogen. This antibody is against the phosphorylated muscle isoform. Ser 8 is a substrate for AMPK, CaMKII and MAPKAP kinase 2.

For in vitro use only.

For research use only.

Not for clinical use or consumption.

Not for diagnostic use.

Do not inject in humans or animals.