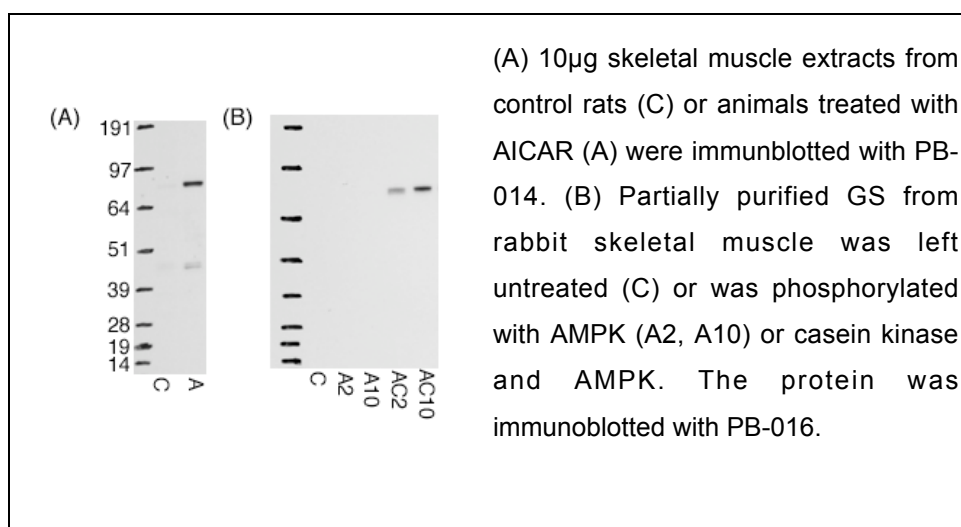


**Anti glycogen synthase phospho Ser 8 / 11****Order No. PB-016****Antibody concentration: 1.18 mg/ml****Lot No 2****Amount per vial: 100µg****Store at -20°C****Product description:**

Polyclonal, affinity purified antibody raised in sheep against the peptide CPLSRSLpSMSpSLPGLED, resembling residues 2-17 of rat glycogen synthase Acc. Number S02269, phosphorylated at residues 8 and 11. Recognises rat and rabbit. Mouse and human not tested.

**Applications:** Western blotting, other not tested**Application advise**

Western blocking buffer: 10% dry milk, 50mM Tris pH 7.5, 150mM NaCl, 0.1% Tween.

1st Ab buffer: 1µg/ml antibody in western blocking buffer. Incubate for 4 to 16 hours at 4°C for optimal results. Wash buffer: 50mM Tris pH 7.5, 150mM NaCl, 0.1% Tween.

2nd Ab buffer: HRP coupled anti sheep Pierce 31480 (1:10000) in western blocking buffer.

**Background information**

Glycogen synthase is involved in the regulation of blood glucose levels via the synthesis of muscle and liver glycogen. This antibody is against the phosphorylated muscle isoform. Ser 8 is a substrate for AMPK, CaMKII and MAPKAP kinase 2. Ser11 is a substrate for casein kinase 1.

For in vitro use only.

For research use only.

Not for clinical use or consumption.

Not for diagnostic use.

Do not inject in humans or animals.