

**Anti CRMP-2 pThr509, pThr514**

Collapsin Response mediator protein 2

Dihydropyrimidinase-related protein 2

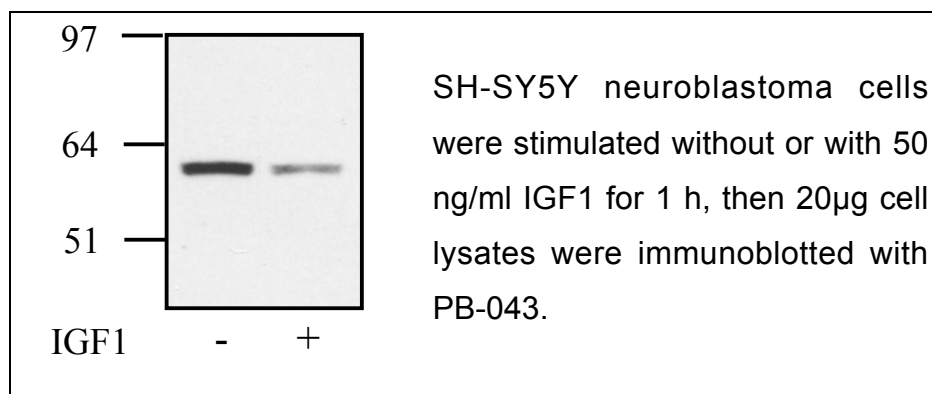
**Order No. PB-043**

Antibody concentration: 0.69 mg/ml

Amount per vial: 100µg

**Lot No 1**

Store at -20°C

**Product description:**

Polyclonal, affinity purified antibody raised in sheep against the peptide CEVSVpTPKTVpTPAS resembling aa 504-517 of human CRMP-2 Acc. No. Q16555 phosphorylated at Thr 509 and Thr514. Recognizes phosphorylated human, rat and mouse CRMP-2.

**Applications:** Western blotting**Application advise**

For western blot with brain extract load 5µg protein, as CRMP-2 is very abundant in brain.

Western blocking buffer: 5% dry milk, 50mM Tris pH 7.5, 150mM NaCl, 0.1% Tween.

1st Ab buffer: 0.1 -1µg/ml antibody in western blocking buffer in the presence of 1µM dephospho peptide PT-043 (comes with the antibody). Wash buffer: 50mM Tris pH 7.5, 150mM NaCl, 0.1% Tween.

2nd Ab buffer: HRP coupled anti sheep Pierce 31480 (1:10000) in western blocking buffer.

## **Background Information**

CRMP-2 was identified as a major brain substrate for glycogen synthase kinase 3. Residues Thr509, Thr514 and Thr518 are phosphorylated by GSK3 upon priming by phosphorylation of Ser522, possibly by CDK5 (Cole et al., 2004 J. Biol. Chem. 279:50176-80 and Cole et al., 2006 J. Biol. Chem. 281:16591-8).

For in vitro use only.

For research use only.

Not for clinical use or consumption.

Not for diagnostic use.

Do not inject in humans or animals.