

**Anti TAB2 pSer372**

**Anti TAK1 binding protein 2 pSer372**

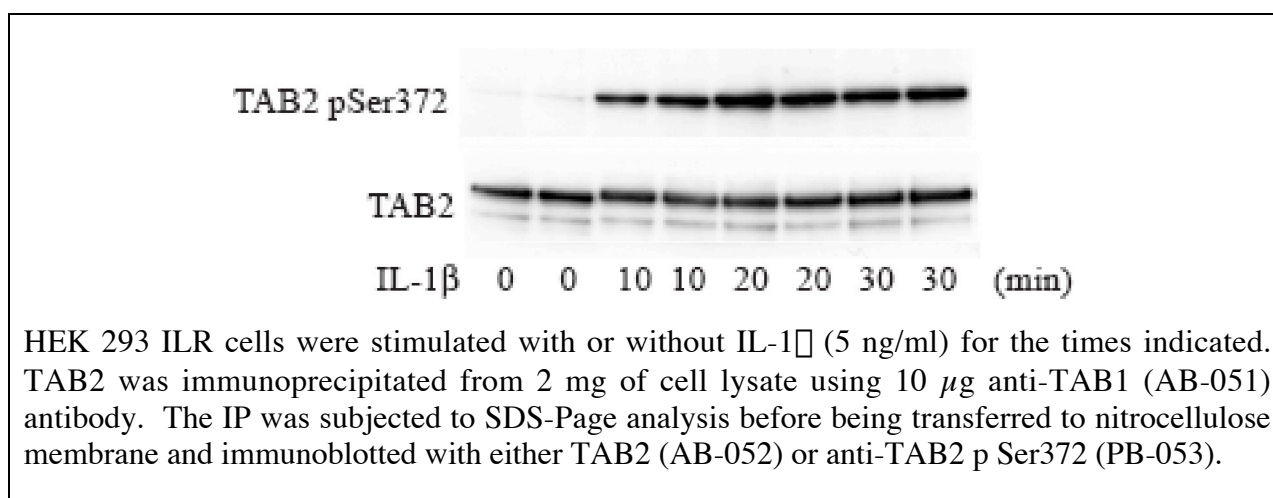
**Order No. PB-053**

**Antibody concentration: 0.32 mg/ml**

**Amount per vial: 100µg**

**Lot No 1**

**Store at -20°C**



**Product description:**

Polyclonal, affinity purified antibody raised in sheep against the peptide YIAApSPPNTD resembling residues 368 – 377 of human TAB2 (Acc. No. NP\_055908), phosphorylated at Ser372. Recognizes human and mouse, other species not tested.

**Applications:** Western blotting. TAB2 is of very low abundance in many cell lines and may only be detected by western blotting upon immunoprecipitation.

## **Application advise**

Western blocking buffer: 5% dry milk, 50mM Tris pH 7.5, 150mM NaCl, 0.1% Tween.

1st Ab buffer: 1µg/ml antibody and 5µg/ml dephosphopeptide (PT-053 comes with the Ab) in western blocking buffer for 4h to 16h incubation. Wash buffer: 50mM Tris pH 7.5, 150mM NaCl, 0.1% Tween.

2nd Ab buffer: HRP coupled anti sheep Pierce 31480 (1:10000) in western blocking buffer.

## **Background information**

TAB2 and TAB3 are adaptor proteins linking the TGF- $\beta$  activated kinase 1 (TAK1) to upstream adaptor proteins of the TRAF-family, thereby mediating cytokine induced TAK1 activation (Besse et al., 2007 J. Biol. Chem. 282: 3918-3928). TAB2 itself is regulated by phosphorylation on Ser372 and Ser524 catalysed by one or more unidentified kinases (Mendoza et al., 2008 Biochem. J. 409:711-722).

For in vitro use only.

For research use only.

Not for clinical use or consumption.

Not for diagnostic use.

Do not inject in humans or animals.