

**Anti filamin C pSer2213**

**Anti  $\gamma$  filamin pSer2213**

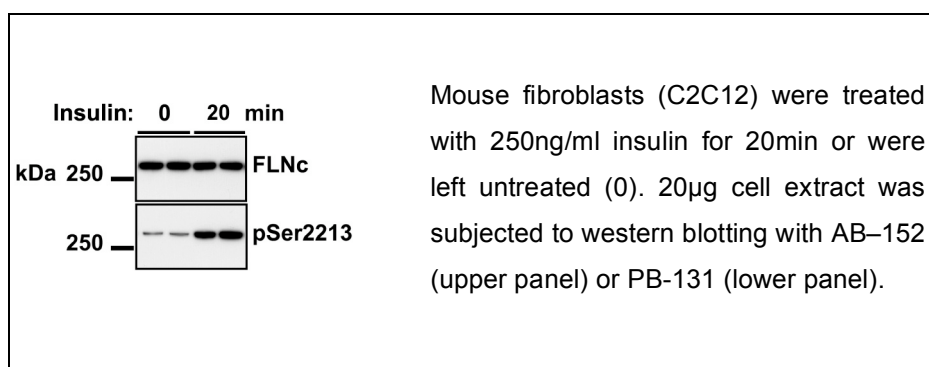
**Order No. PB-131**

**Antibody concentration: 0.29 mg/ml**

**Amount per vial: 100 $\mu$ g**

**Lot No 1**

**Store at  $-20^{\circ}\text{C}$**



**Product description:**

Polyclonal, affinity purified antibody raised in sheep against the peptide GRERLGpSFGSITR resembling aminoacids 2207-2219 of human filamin C (NP\_001449), phosphorylated at Ser2213. Recognizes human and mouse, other species not tested.

**Applications:** Western blotting, other not tested

**Application advise**

Western blocking buffer: 5% dry milk, 50mM Tris pH 7.5, 150mM NaCl, 0.1% Tween.

1st Ab buffer: 0.2 $\mu$ g/ml antibody in western blocking buffer plus 2 $\mu$ g/ml non phospho peptide (PT-131, provided with PB-131) for o/n incubation. Wash buffer: 50mM Tris pH 7.5, 150mM NaCl, 0.1% Tween.

2nd Ab buffer: HRP coupled anti sheep Pierce 31480 (1:10000) in western blocking buffer.

## **Background information**

Murray et al., 2004 Biochem. J. Vol 384 pp489-494 describe the discovery of filamin C as physiological substrates of AKT1/PKB $\alpha$ . Filamin C is not a substrates for RSK SGK or S6K1 and may serve as a marker for AKT/PKB activity. The authors used the KESTREL approach for the discovery.

For in vitro use only.

For research use only.

Not for clinical use or consumption.

Not for diagnostic use.

Do not inject in humans or animals.