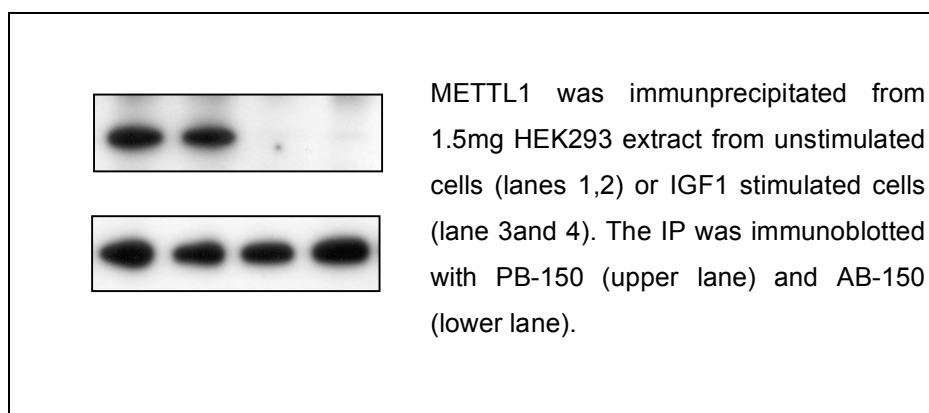


**Anti Methyl Transferase like 1 phospho Ser27
METTL1, human****Order No. PB-150****Antibody concentration: 1.5 mg/ml****Lot No 1****Amount per vial: 100µg****Store at -20°C****Product description:**

Polyclonal, affinity purified antibody raised in sheep against the peptide CYRQRAHpSNPMADH, representing aa 20-33 plus N-terminal C of METTL1, Q9UBP6, phosphorylated at Ser27.

Recognizes human METTL1, phosphorylated at Ser27. Other species not tested.

Applications: Western blotting after IP with AB-150.

Application advise

The antibody is useful, when METTL1 was immunoprecipitated from cells.

Western blocking buffer: 5% dry milk, 50mM Tris pH 7.5, 150mM NaCl, 0.1% Tween.

1st Ab buffer: 1 – 2µg/ml antibody in western blocking buffer plus 10µg/ml dephospho peptide (provided with PB-150). Best results if incubated for 16h at 4°C. Wash buffer: 50mM Tris pH 7.5, 150mM NaCl, 0.1% Tween.

2nd Ab buffer: HRP coupled anti sheep Pierce 31480 (1:50000) in western blocking buffer.

For in vitro use only. For research use only. Not for clinical use or consumption.
Not for diagnostic use. Do not inject in humans or animals.