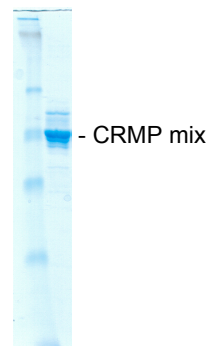


CRMP from rat brainCollapsin response mediator protein
Mix of isoforms**SU-045-100****Protein concentration 2.1 mg/ml****Amount 0.1mg****Purity > 85%****Batch 1**Store at -80°C

4 μg rat CRMP was separated
on SDS-PAGE and stained
with Coomassie blue.

**Product description CRMP purified from rat brain**

The product was purified to near homogeneity using a combination of IEX and gel filtration chromatography, validated by MALDI-TOF Fingerprinting & Tandem MS sequencing and stored in 50 mM Tris-HCl pH 7.5, 0.1 % 2-mercaptoethanol, 0.03 % Brij-35.

Application

Kinase assays: substrate for GSK3 and other kinases

Health and Safety

For research use only, not for clinical use or consumption.

Do not inject or feed to animals.